

HL-5050/HL-5070N Laser Printers for Business

The HL-5050 and HL-5070N laser printers are flexible and expandable printers for your home, office or small-connected workgroup.

With fast print speeds, graphics quality printing, upgradeable memory and outstanding user support, these new additions to our award winning laser printer line set a new standard for quality monochrome printing.

The new HL-5050 and HL-5070N deliver the perfect balance of performance, flexibility and value.

HL-5050 *The expandable, high-quality personal graphics printer*

- ◆ Up to 17ppm print speed¹
- ◆ HQ1200 resolution (up to 2400x600dpi)
- ◆ 16MB of standard memory, upgradeable to 144MB*
- ◆ 300-sheet paper capacity
 - ◆ 2nd 250-sheet paper tray
 - ◆ 50-sheet multi-purpose tray for card stock, letterhead and envelopes
- ◆ PCL®6 and BR-Script3 (PostScript®3™ language) emulations standard
- ◆ Windows® and Mac® compatible
- ◆ USB 2.0 and Parallel interfaces
- ◆ Up to 3,300 page toner cartridge standard²

Options*:

- ◆ 2nd 250-sheet lower paper tray
- ◆ 10/100 BaseT Ethernet Print Server

HL-5070N *The small workgroup network-ready laser printer*

The HL-5070N includes all of the features of the HL-5050 plus:

- ◆ Built-in 10/100 BaseT Ethernet Print Server
- ◆ Network Management Tools: BAdmin Professional, Brother Web-Based Management, Driver Deployment Wizard, Web-BAdmin⁵



HL-5050/5070N Product Specifications

Model

- ◆ **Print Technology:**
Electrophotographic laser
- ◆ **Print Speed:**
Up to 17ppm¹
- ◆ **Time to First Print:**
< 12 seconds
- ◆ **Resolution:**
300dpi, 600dpi, HQ1200³
- ◆ **Memory:**
16MB, up to 144MB via 100-pin DIMM*
- ◆ **Processor:**
Fujitsu SPARClike 133MHz
- ◆ **Printer Emulations:**
PCL®6, BR-Script3⁴, IBM Proprinter and Epson FX
- ◆ **Resident Fonts:**
PCL: 66 scalable fonts, 12 bitmap, 11 bar codes, BR-Script3: 66 scalable fonts (PS/3)
- ◆ **Interfaces:**
IEEE 1284 Parallel, USB 2.0, 10/100 BaseT Ethernet (HL-5070N)

Paper Handling

- ◆ **Standard Input:**
250-sheet paper tray
50-sheet multi-purpose tray
- ◆ **Optional Input:**
2nd 250-sheet lower paper tray*
- ◆ **Output:**
150 sheets face down
- ◆ **Paper Sizes:**
Letter, legal, executive, A4, A5, A6, B6, B5 and envelopes: Com 10, DL, B5, C5
- ◆ **Media Types:**
Plain paper, bond, envelopes, labels, transparencies
- ◆ **Media Weights:**
Standard paper tray - 16 to 28 lbs.
Multi-purpose tray - 16 to 43 lbs.

Software

- ◆ **Printer Drivers:**
PCL: Windows® 95/98/NT 4.0/Me/2000/XP
Mac: Mac USB (OS 8.6-9.2, OS X 10.1, 10.2.1)
PostScript®3™ PPD
- ◆ **Other Software:**
Interactive Help, Driver Deployment Wizard

Networking

- ◆ **Optional Network Interface (HL-5050):**
10/100 BaseT Ethernet (NC-2100p)*
- ◆ **Multi-Protocol Support:**
HL-5050 with optional NC-2100p: TCP/IP, AppleTalk, NetBEUI
HL-5070N: TCP/IP, AppleTalk, IPX/SPX, DLC/LLC
- ◆ **Network Management Tools:**
Web-BAdmin⁵, BAdmin Professional, Web-based Management

Physical Dimensions

- ◆ **Size / Weight:**
15.0"(w) x 15.8"(d) x 9.9"(h) / 25.4 lbs.

Electrical

- ◆ **Power Requirements:**
120 VAC +/- 10% 50/60 Hz
- ◆ **Power Consumption:**
Printing < 460W
Standby < 75W
Sleep mode < 5W (HL-5050), < 6W (HL-5070N)

Environmental

- ◆ **Temperature:**
50°F to 90.5°F (10°C to 32.5°C)
- ◆ **Humidity:**
20% - 80% (without condensation)
- ◆ **Noise:**
Printing: < 50dB; Standby: < 30dB

Service

- ◆ **Warranty:**
One year limited express exchange warranty
- ◆ **Service:**
One year limited parts and labor

Supplies and Yields²

- ◆ **Toner:**
TN-530: up to 3,300 pages @ 5% coverage
TN-560: up to 6,500 pages @ 5% coverage
- ◆ **Drum:**
DR-500: up to 20,000 pages

Options and Accessories*:

- | Item | Part Numbers |
|----------------------------|--------------|
| Standard Toner Cartridge | TN-530 |
| High-Yield Toner Cartridge | TN-560 |
| Drum Unit | DR-500 |
| 2nd Lower Paper Tray | LT-5000 |
| 10/100 BaseT Print Server | NC-2100p |

Consult your Brother representative for more details.
For more information, please visit our Web site at www.brother.com
or call (908) 704-1700 or the Brother Fax Back system at (800) 521-2846.



At your side.™
brother®
www.brother.com

Brother International Corporation
100 Somerset Corporate Boulevard
Bridgewater, NJ 08807

CATHL505070N
01-03

HL-5050/HL-5070N Laser Printers for Business

Fast, High-Quality Output for Your Office or Small Workgroup

Featuring...

- Up to 17 pages per minute
- HQ1200 resolution (up to 2400x600dpi)
- 16MB memory standard, upgradeable to 144MB*
- 300-sheet paper input capacity
 - 250-sheet paper tray standard
 - 50-sheet multi-purpose tray for card stock, letterhead & envelopes
- PCL®6 and BR-Script3 emulations standard
- Windows® and Mac® compatible
- USB 2.0 and Parallel interfaces
- Ethernet interface available* (standard on HL-5070N)

HL-5050

HL-5070N

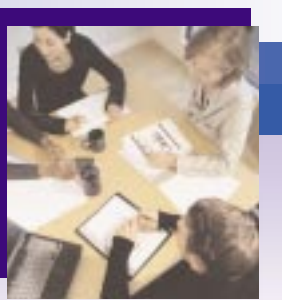


At your side.™
brother®

HL-5050/5070N

Affordable, high-performance
laser printers

Fast, high-quality



For offices and workgroups

The new HL-5050 and HL-5070N monochrome laser printers from Brother represent the new standards for personal office and small workgroup printing.

With up to 17ppm print speed, increased memory, and great print quality, these printers offer both performance and productivity for today's busy office or small workgroup.

HL-5050 – The Expandable, High-Quality Personal Graphics Printer

The HL-5050 is a fast, powerful monochrome laser printer. With up to 17 page per minute print speed, HQ1200 resolution (up to 2400x600dpi), 16MB of built-in memory, PCL®6 and BR-Script3 (PostScript®3™) compatibility, the HL-5050 is an excellent desktop office printer.

The HL-5050 features a 300-sheet paper input capacity, with a 250-sheet paper tray and a 50-sheet multi-purpose tray. The multi-purpose tray accommodates card stock, letterhead, and envelopes.

The HL-5050 also provides a convenient job cancel button to make unwanted print jobs disappear easily.

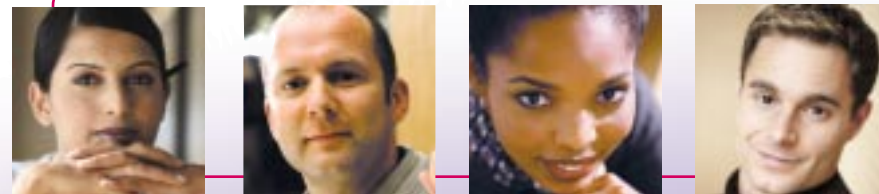
Fast print speeds, excellent print quality, and versatile paper handling make the HL-5050 an excellent choice for personal printing.

HL-5070N – The Small Workgroup Network-Ready Laser Printer

The HL-5070N offers all the features and performance of the HL-5050, but arrives with 16MB of memory and an internal 10/100 BaseT Ethernet print server.

The HL-5070N also includes a comprehensive set of network management tools. Use either BRAdmin Professional or your Web browser to perform essential network management tasks.

The HL-5070N also supports IPP (Internet Printing Protocol) and our innovative Brother Internet Print (BIP) for printing documents through a firewall over the Internet. Our Driver Deployment Wizard makes multiple printer setup quick and easy.



Printers that deliver quality and performance

The HL-5050 and HL-5070N printers deliver their highest quality output (HQ1200 – up to 2400x600dpi) at up to 17 pages per minute – their fastest print speed.

There is no trade-off between speed and high-quality output.



Extensive compatibility

The HL-5050 and HL-5070N are PC and Mac® compatible and come with a complete set of drivers for both platforms. Automatic emulation and interface switching make them ideal for mixed user environments.



Paper handling flexibility with room for expansion

The HL-5050 and HL-5070N can handle virtually any media via a 250-sheet paper tray and 50-sheet multi-purpose tray. An optional second 250-sheet lower paper tray can be added, increasing your total input capacity to 550 sheets.

Extensive user support

The new HL-5050 and HL-5070N printers feature a variety of innovative and useful support tools.

A user-friendly driver installation routine auto-detects your operating system as well as any installed options. Animated tutorials answer common maintenance and support questions. This highly visual system provides direct, step-by-step help.

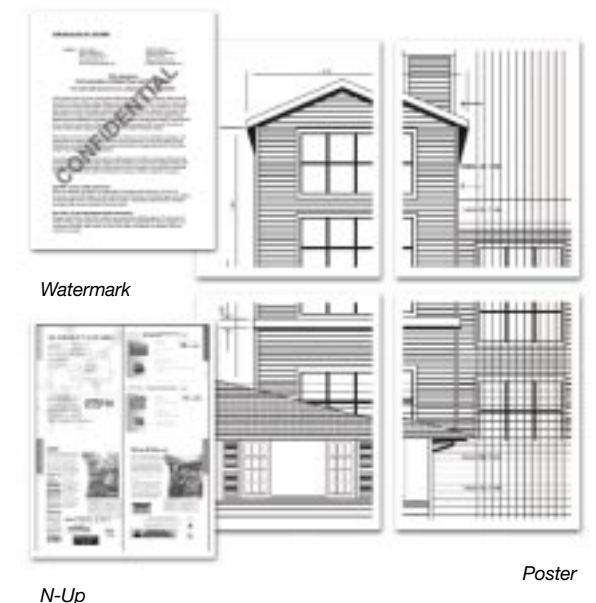
For added support, the Brother Solutions Center (<http://solutions.brother.com>) is an online repository of information, driver downloads and FAQs to help you get the most out of your printer.



Advanced features that go beyond your expectations

The HL-5050 and HL-5070N printers offer many advanced features that will exceed your expectations and reaffirm their value. These include:

- Poster Printing
- Watermark Printing
- Toner Save Mode
- N-Up Printing
- Job Cancel
- Booklet Printing
- Manual Duplex
- IPP Printing (HL-5070N)



Service and support are part of the package

Your technology investment is backed by our dedication to comprehensive service and support. We provide toll-free technical support, a one-year limited warranty, and the online Brother Solutions Center (<http://solutions.brother.com>), all backed by our nationwide network of authorized customer-care centers.

